



Websense  
Email Security

Websense  
Hosted Email Security

Websense  
Hybrid Email Security

## **Websense Messaging Security Solutions**

# The Websense Approach to Messaging Security

Websense® enables organizations to harness the power of email as a vital business communication vehicle while keeping today's security risks in check. Stopping today's threats requires an expansive view that goes well beyond email. By integrating best-in-class Web and data security technology with messaging security, Websense achieves unparalleled visibility into emerging threats and the highest possible levels of protection from inbound and outbound email risks.

## Stopping Blended Threats

Protecting email users against converged Web and email threats requires best-in-class Web security. Websense draws on over a decade of Web research and intelligence to ensure email customers are protected. Through the power of the Websense ThreatSeeker Network, Websense is able, in real-time, to proactively discover and classify Web sites that contain viruses, spyware, and other malicious code. This information is then used to detect and stop unwanted emails that contain inappropriate and malicious URLs - stopping threats that other security systems cannot even detect.

## Managing Data Risk

For outbound emails, Websense allows organizations to proactively manage confidential data and inappropriate content. Bolstered by the intelligence of the Websense data security expertise, Websense offers in-depth data inspection combined with more than 100 content and compliance dictionaries pre-packaged in 12 languages. Granular and flexible policy management from Websense allows organizations to enforce appropriate usage of their data, reduce legal liability, support compliance regulations, and prevent data loss.



## Websense ThreatSeeker Network

The Websense ThreatSeeker™ Network adaptive security technology uses more than 50 million real-time data collecting systems that continuously monitor Internet content—including new and dynamic content—for emerging threats. The Websense ThreatSeeker Network feeds this intelligence into its Web security, messaging security, and data loss prevention solutions. As a result, Websense is able to adapt to the rapidly changing Internet at speeds not possible by traditional security solutions and basic email filtering solutions.

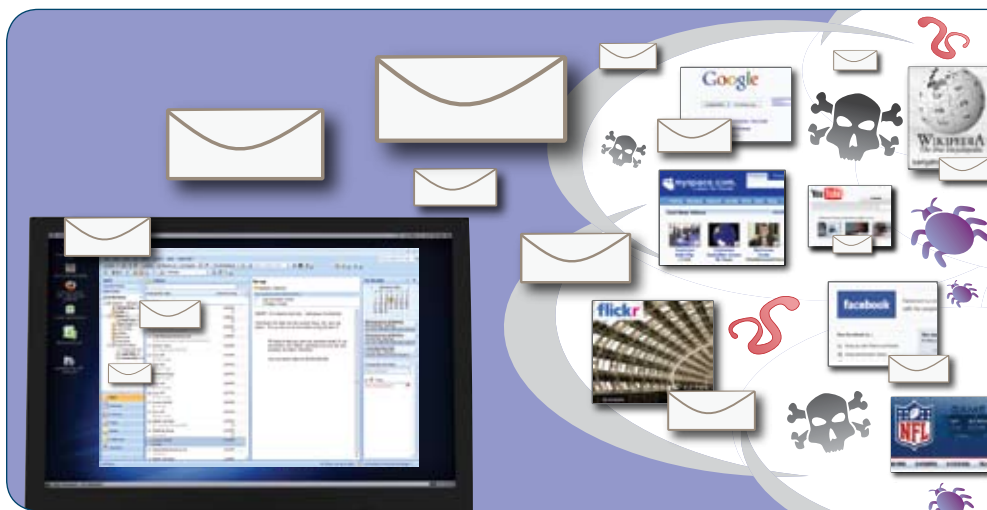
The ThreatSeeker Network:

- Analyzes more than 40 million Web sites per hour.
- Assigns reputation to more than 2 million domains, networks, IP addresses, and hosts every hour
- Scans nearly 10 million emails for unwanted content and malicious code every hour
- Captures more than 10 million unsolicited spam, phishing, or exploit campaigns every day

## Email Security in a Web 2.0 World

Email security is fundamentally different today than it was only a short time ago. Malicious threats used to be concealed in attachments, but today 85 percent of unwanted emails contain a link to a Web site.\* While cybercriminals have turned to the Web to deliver spyware, phishing attacks, and viruses in order to infiltrate networks and steal confidential data, they are using email to lure users into their traps. Increasingly these traps utilize rapidly changing Web 2.0 sites like social networking sites and blogs, as well as other “trusted” sites with good reputations that have been compromised.

Although they are now commonly used, these engineered attacks are very targeted and difficult to detect by traditional techniques. Cybercriminals often send very small messages with links to seemingly legitimate Web sites that slip by most spam and malware defenses. Reactive, signature-based approaches and reliance on URL reputation are not enough to protect end-users from these malicious attacks.



The use of the Web in spam attacks continues to grow.

## The Proliferation of Data Leaks via Email

Preventing loss of confidential information is one of the top challenges that many businesses face today and managing data leaks via email is of high concern. With the vast majority of data now digitized and readily available via corporate networks, it is all too easy for employees to intentionally or accidentally send inappropriate content or confidential data to places it doesn't belong. Insufficient outbound protection can result in legal liability, damage to a company's reputation, and violation of compliance regulations.

\* Websense Security Labs Threat Report, July 2008



“Having our email controlled in the cloud [with Websense Hosted Email Security] takes the load off our in-house servers and eliminates the need for any day to day management.”

### Terry Kemp,

Infrastructure Manager,  
Nelson Marlborough District  
Health Board



“We chose Websense Email Security because of its phenomenal granular policy enforcement capabilities that clearly outshine other solutions on the market.”

**Jay Wessel,**  
VP of Technology,  
Boston Celtics

## A Best Practice Portfolio for the New Threat Landscape

Available as both a hosted service and on-premise software, Websense Messaging Security allows organizations to take a layered approach to email security with a hybrid deployment. First, the Websense hosted service blocks spam and other threats before they even reach an organization’s gateway, followed by additional on-premise security inside the network to prevent data loss. This allows organizations to gain the full spectrum of protection for essential information. Websense Messaging Security changes the complex and uncertain email landscape into one that is secure and under control.

### Websense Hosted Email Security

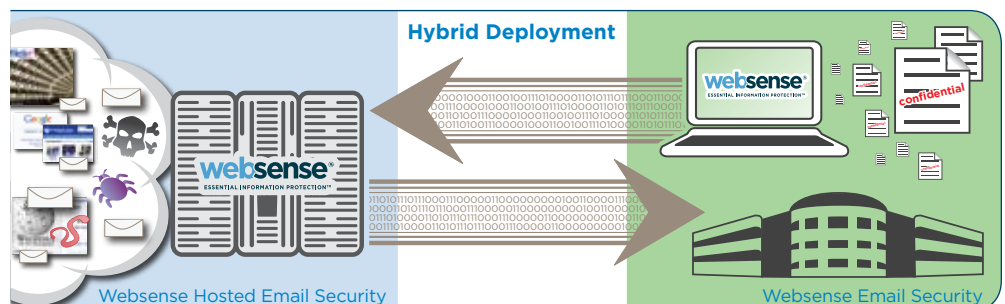
Maintaining comprehensive protection on an exclusively in-house basis has become difficult, especially with the vast array of complex threats that continue to bombard our networks. Even the most skilled IT manager is often over-burdened and costs can quickly get out of hand. A hosted solution solves these challenges immediately—reducing business costs, eliminating complexity, and providing comprehensive protection.

Websense Hosted Email Security analyzes millions of emails and Web requests every day, detecting malware patterns as they emerge in real time, protecting organizations from attack long before traditional antivirus technology is even aware of the threat. Available in four modules, Websense Hosted Email Security provides protection at the Internet level, before threats reach an organization’s network.

- **Hosted Antivirus.** Websense Hosted Antivirus protects against viruses proactively by processing every message through multiple antivirus engines and Websense ThreatSeeker technology.
- **Hosted Antispam.** Websense Hosted Antispam protects against all types of spam—including phishing, image, and PDF spam by using a combination of powerful techniques to filter each message.
- **Hosted Content Filter.** With Websense Hosted Content Filter, an administrator can control their corporate email policy, increase security, and reduce legal liability by ensuring compliance with federal regulations and global privacy standards.
- **Hosted Encryption.** To secure communications between partners and individuals, Websense Hosted Encryption is a cost-effective and easy-to-use alternative to client-based encryption.



Websense Hosted Email Security saves organizations time and money managing email security at the Internet level.



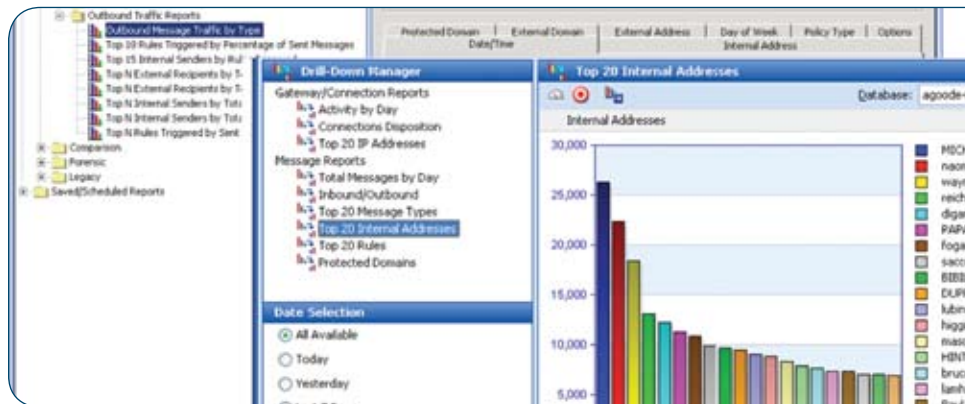
The Websense Messaging portfolio includes Websense Hosted Email Security, Websense Email Security, and Websense Hybrid Email Security which combines both a hosted and on-premise layered solution.



## Websense Email Security

Email remains one of the most common methods of infecting a network with viruses, spam, and other types of malware. What is less known is that email is also a common source of outbound violations as well, resulting in data loss or regulatory non-compliance. Websense Email Security is a software-based gateway solution that incorporates multiple layers of real-time intelligence, providing protection against complex inbound and outbound threats. In addition, Websense Email Security provides powerful and flexible rules-based policy controls for enforcing corporate email policies.

- **Integrated antivirus protection.** Websense Email Security combines multiple antivirus technologies, including zero-hour scanning, for integrated protection against all virus threats, even before they become known and catalogued.
- **Powerful antispam protection.** With antispam protection, Websense Email Security leverages in-depth knowledge of Web and email attacks.
- **Integrated reputation analysis.** Reputation services are built into Websense Email Security, providing deep connection-level management of incoming email and providing an additional layer of zero-hour protection.
- **Easy to install and administer.** Websense Email Security includes automatic database updates, flexible policy settings, and pre-defined and customizable reports with the precise data organizations need.



Websense Email Security provides flexible and granular reporting capabilities.

## Websense Hybrid Email Security

Websense Hybrid Email Security combines Websense Hosted Email Security at the Internet level, and Websense Email Security at the gateway. This layered, hybrid deployment keeps administrative overhead down, while providing the greatest level of efficiency and protection.

Inbound protection is delivered through the hosted solution, filtering spam and viruses, while the on-premise solution provides for a highly granular level of outbound email protection. Through this powerful combination, organizations can configure finely-tuned policies for outbound filtering, ensuring compliance with internal policies and federal regulations, while taking advantage of the simplicity of a hosted model to prevent inbound threats.

## Websense Combined Messaging Security and Web Protection

The Websense Messaging Security family works hand-in-hand with Websense Web Security, providing these solutions:

### Websense Web Security and Websense Email Security

- Provides comprehensive protection for all types of Internet traffic, including inbound threats such as spam and malware, and outbound threats such as data loss. Helps protect critical assets and establish a culture of accountability by reducing risk, enabling compliance, and ensuring continuity.

### Websense Hosted Email and Websense Hosted Web Security

- Provides centralized protection against email and Web threats including malware, spam, phishing, and inappropriate content by filtering Internet traffic before it reaches your network. Its highly effective security is simple to implement with nothing to install or maintain on-site, and is designed to save both time and money. Guaranteed by industry-leading service level agreements (SLAs), Websense Hosted Security reduces the cost, complexity, and uncertainty of managing email and Web-based threats while providing the highest degree of protection.

**Websense, Inc.**  
San Diego, CA USA  
tel 800 723 1166  
tel 858 320 8000  
www.websense.com

**Websense UK Ltd.**  
Reading, Berkshire UK  
tel 0118 938 8600  
fax 0118 938 8698  
www.websense.co.uk

**Australia**  
websense.com.au

**Brazil**  
portuguese.  
websense.com

**Colombia**  
websense.com.es

**France**  
websense.fr

**Germany**  
websense.de

**Hong Kong**  
websense.cn

**India**  
websense.com

**Ireland**  
websense.co.uk

**Israel**  
websense.co.uk

**Italy**  
websense.it

**Japan**  
websense.jp

**Malaysia**  
websense.com

**Mexico**  
websense.com.es

**PRC**  
prc.websense.com

**Singapore**  
websense.com

**Spain**  
websense.com.es

**Taiwan**  
websense.cn

**UAE**  
websense.com

## The Company Behind the Solutions

Websense is a leader in integrated Web, data and email security, protecting the essential information of more than 42 million people around the world. Websense software and hosted security solutions help organizations block malicious code, prevent the loss of confidential information, and enforce Internet use and security policies.

After 15 years of Internet experience, nobody knows the Web like Websense. Websense has unprecedented visibility into the internal and external movement of information in the Web 2.0 world with knowledge of:

- **Who** is authorized to access Web sites, content, or applications
- **What** data must be protected from leaks
- **Where** users can go online and sensitive data can be sent
- **How** sensitive data can be communicated and online resources can be used

Websense provides unparalleled protection by means of the ThreatSeeker Network—the technology foundation for Websense Web, data, and email security solutions. The ThreatSeeker Network provides the intelligence that underlies Essential Information Protection™ by delivering real-time reputation analysis, expanded behavioral analysis and actual data identification.

Websense ThreatSeeker Network uses more than 50 million real-time data collecting systems to analyze one billion pieces of content daily, analyzes more than 100 million sites daily, assigns reputation to more than two million domains, networks, IP addresses and hosts every hour, and scans nearly 10 million emails for unwanted content and malicious code every hour.

Learn more about Essential Information Protection, the ThreatSeeker Network, and the entire line of Websense solutions at [www.websense.com](http://www.websense.com). Say Yes to Web 2.0 with Websense.