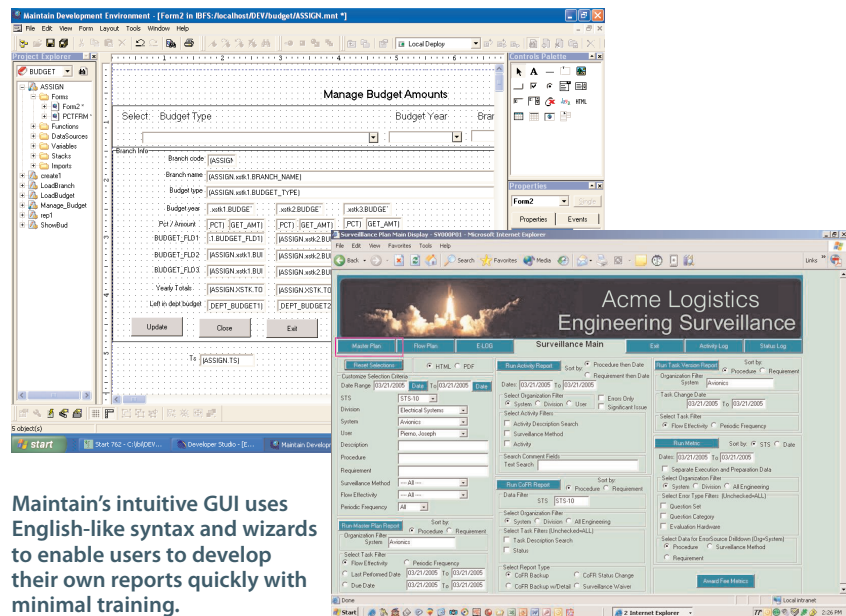


Information Builders enables agile information solutions with business intelligence (BI) and integration technologies. Flexible, scalable, and secure, WebFOCUS – the most widely utilized BI platform – permeates every level of the extended enterprise through a simple and intuitive user experience.

# WebFOCUS Maintain

Extending the Benefits of WebFOCUS



Maintain's intuitive GUI uses English-like syntax and wizards to enable users to develop their own reports quickly with minimal training.

Did you know that you can create and run transactional Web-based applications on your WebFOCUS server? It's easy with Information Builders' WebFOCUS Maintain. By augmenting your WebFOCUS server and Developer Studio environments, you can enable users to design their own forms, update business logic, and run Web applications that can function in standalone environments or linked from existing WebFOCUS reports and applications.

WebFOCUS Maintain is a high-performance solution for building wide-scale business intelligence and data maintenance applications and deploying them to any number of concurrent users. With an intuitive graphical user interface (GUI) and seamless integration with JavaScript, VB Script, and HTML code, users can achieve pixel-perfect positioning of objects on forms, including list boxes, combo boxes, HTML tables, buttons, and radio groups.

### Easy-to-Use, Scalable Solution Ensures Success

The Maintain language and development environment can be learned in a short amount of time. Maintain's inherent ease of use is enhanced through its English-like syntax and

language wizards. And, with Unicode and national language support (NLS), translating applications into different languages is simple and straightforward. Unlike applications designed and deployed using Java™ – which require many lines of programming language – Maintain uses simple, and direct code. This means that tasks, such as interfacing with databases, are quick and simple to perform.

Accomplished in two key ways, the WebFOCUS Maintain shared application server has proven its scalability for the Web. By exploiting load balancing to grow and shrink as the load increases and decreases, and by supporting “n-tier” processing, developers can partition application logic over one or more platforms. Data can be processed where it resides, requests can run faster, and network traffic is dramatically reduced – important considerations when building applications that need to scale up for a large number of end users or very large data repositories. The server can be distributed and linked to WebFOCUS servers on any other platform.

Further solidifying Maintain’s unparalleled scalability, organizations are able to reuse application resources and employee efforts across the enterprise. WebFOCUS Maintain features modular code, which allows for team development, cross-enterprise deployment, and reusable procedures.

### **Key Feature Summary**

WebFOCUS Maintain provides:

- The ability to easily retrieve, display, and manipulate large sets of data from up to 15 separate databases, including dissimilar databases – such as FOCUS, SQL, DB2, and Oracle – located on different servers throughout the enterprise
- Integration of existing table and graph procedures for both database retrieval and display
- Unicode and NLS support
- Capabilities to update information stored in databases through closed-loop business intelligence
- An object-oriented 4GL for structured, object-oriented, and hybrid programming
- A shared application server for:
  - Persistent data and communications
  - User connection pooling
  - Workload balancing
- An Excel write-back feature, which allows Excel users, such as those working with budgeting applications, to share data enterprise-wide and update a central database via spreadsheets
- A graphical interface that completely avoids complex languages like “C” or Java or complex standards such as COM or CORBA
- Relational data, XML, and ERP connectors, with native access to over 85 data types
- CICS and IMS connectors, for access to legacy transactional data
- Connection and context/state management, for operational efficiency
- Resource governing to prevent runaway queries

## Find Out More

To find out how our solutions can help your company succeed, talk to an Information Builders representative today.

Contact your local Information Builders office, visit us at

**[www.informationbuilders.com](http://www.informationbuilders.com)**,

or in the U.S. and Canada, call

**(800) 969-4636.**

- Mobile solutions that allow developers to build and deploy applications for offline data collection through iPhone, Palm, Blackberry, and other handheld devices
- The ability to easily create light update solutions to enhance business intelligence applications with update capabilities

### **WebFOCUS Maintain Benefits**

WebFOCUS Maintain offers a truly cross-platform, write-once, run-anywhere solution for developing and deploying applications quickly and efficiently. Benefits include:

- Effortlessly switch database engines – with iWay adapters, your application can be moved if the organization outgrows your database vendor or you decide to change vendors for any other reason
- Development efficiencies – easy-to-use English-like syntax results in fewer lines of code, less testing, reduced support requirements, and shorter learning curves, as well as the ability to engage more people in the application development cycle
- Unparalleled data access – provides read/write capabilities via native interfaces to over 300 data types, including all major relational database structures, ERP packages, legacy data, and transaction systems such as CICS and IMS
- Web persistence – supports standard browsers and comes complete with a persistence engine so that the state of a user's application session can be maintained from HTML page to HTML page; non-persistent or stateless models are also fully supported, which are less complex than persistent applications, releasing all resources after processing but still keeping the thread of an application between screens
- Support for e-commerce – initiatives such as credit card verification, sales tax calculation, and fraud checking are supported through interfaces with VeriFone (vPOS) and CyberSource (CommerceFlex)
- Leveraged resources – provides reusable components that are easy to incorporate; for example, non-WebFOCUS Maintain applications and languages can use the Maintain engine and middleware, allowing you to easily embed ActiveX controls, Java components, or tools such as Microsoft Excel in the WebFOCUS Maintain application
- Support for global enterprises – with Unicode and NLS supported on the server, multinational organizations can use the same applications and resources across all of their facilities
- Integrated development environment – provides reporting and update solutions using WebFOCUS Developer Studio to build Maintain applications – creating forms, composing business logic, and deployment – an update assist tool provides wizard-style creation of light update solutions

# Sales and Consulting Offices

## North America

### United States

- **Atlanta,\*** GA (770) 395-9913
- **Baltimore,** MD Consulting: (703) 247-5565
- **Boston,\*** MA (781) 224-7660
- **Channels,** (800) 969-4636
- **Charlotte,\*** NC Consulting: (704) 494-2680
- **Chicago,\*** IL (630) 971-6700
- **Cincinnati,\*** OH (513) 891-2338
- **Cleveland,\*** OH (216) 520-1333
- **Dallas,\*** TX (972) 490-1300
- **Denver,\*** CO (303) 770-4440
- **Detroit,\*** MI (248) 641-8820
- **Federal Systems,\*** DC (703) 276-9006
- **Hartford,** CT (860) 249-7229
- **Houston,\*** TX (713) 952-4800
- **Los Angeles,\*** CA (310) 615-0735
- **Metro Branch (NY/NJ),\***
  - NY Sales: (212) 736-7928
  - NJ Sales: (973) 593-0022
  - Consulting: (212) 736-4433, ext. 4443
- **Minneapolis,\*** MN (651) 602-9100
- **New Jersey\*** (973) 593-0022
- **Orlando,\*** FL (407) 804-8000
- **Philadelphia,\*** PA (610) 940-0790
- **Pittsburgh,** PA (412) 494-9699
- **St. Louis,\*** MO (636) 519-1411
- **San Jose,\*** CA (408) 453-7600
- **Seattle,\*** WA (206) 624-9055
- **Washington,\*** DC Sales: (703) 276-9006  
Consulting: (703) 247-5565

### Canada

Information Builders (Canada) Inc.

- **Calgary** (403) 538-5415
- **Ottawa** (613) 233-0865
- **Montreal\*** (514) 421-1555
- **Toronto\*** (416) 364-2760
- **Vancouver\*** (604) 688-2499

### Mexico

Information Builders Mexico

- **Mexico City** 52-55-5062-0660

## Australia

Information Builders Pty. Ltd.

- **Melbourne** 61-3-9631-7900
- **Sydney** 61-2-8223-0600

## Europe

- **Belgium** Information Builders Belgium  
Brussels 32-2-7430240
- **France** Information Builders France S.A.  
Paris 33-14-507-6600
- **Germany** Information Builders (Deutschland)  
Dusseldorf 49-211-523-91-0  
Eschborn 49-6196-77576-0  
Munich 49-89-35489-0  
Stuttgart 49-711-7287288-0
- **Netherlands** Information Builders  
(Netherlands) B.V.  
Amsterdam 31-20-4563324
- **Portugal** Information Builders Portugal  
Lisbon 351-217-217-491
- **Spain** Information Builders Iberica S.A.  
Barcelona 34-93-344-32-70  
Bilbao 34-94-425-72-24  
Madrid 34-91-710-22-75
- **Switzerland** Information Builders Switzerland AG  
Dietlikon 41-44-839-49-49
- **United Kingdom** Information Builders (UK) Ltd.  
London 44-845-658-8484

## Representatives

- **Austria** Raiffeisen Informatik Consulting GmbH  
Vienna 43-12-1136-3870
- **Brazil** InfoBuild Brazil Ltda.  
São Paulo 55-11-3285-1050
- **China** InfoBuild China, Inc.  
Shanghai 86-21-50805432
- **Ethiopia** MKTY IT Services Plc  
Addis Ababa 251-11-5501933
- **Finland** InfoBuild Oy  
Espoo 358-207-580-843
- **Greece** Applied Science  
Athens 30-210-699-8225
- **Guatemala** IDS de Centroamerica  
Guatemala City 502-2361-0506
- **Gulf States** Nesma Advanced Technologies
  - Bahrain ■ Kuwait ■ Oman
  - Qatar ■ Yemen ■ United Arab Emirates
  - Riyadh 96-1-465-6767

- **India** Amtex Systems, Inc.  
Chennai 91-44-42177082
- **Israel** NESS A.T. Ltd.  
Tel Aviv 972-3-5483638
- **Italy** Selestia G C Applications S.P.A.  
Genova 39-010-64201-224  
Milan 39-02-2515181  
Torino 3 9-011-5513-211
- **Japan** K.K. Ashisuto  
Osaka 81-6-6373-7113  
Tokyo 81-3-5276-5863
- **Malaysia** Elite Software Technology Sdn Bhd  
Kuala Lumpur 60-3-21165682
- **Norway** InfoBuild Norway  
Oslo 47-23-10-02-80
- **Philippines** Beacon Frontline Solutions, Inc.  
63-2-750-1972
- **Saudi Arabia** Nesma Advanced Technology Co.  
Riyadh 996-1-4656767
- **Singapore**  
Automatic Identification Technology Ltd.  
65-6286-2922
- **South Africa** Fujitsu Services (Pty.) Ltd.  
Johannesburg 27-11-2335911
- **South Korea** Unitech Infocom Co. Ltd.  
Seoul 82-2-2026-3100
- **Sweden**  
InfoBuild AB  
Kista 46-735-24-34-97  
Cybernetics Business Solutions AB  
Solna 46-7539900
- **Taiwan** Galaxy Software Services  
Taipei 886-2-2586-7890
- **Thailand** Datapro Computer Systems Co. Ltd.  
Bangkok 662-679-1927, ext. 200
- **Venezuela** InfoServices Consulting  
Caracas 58-212-763-1653

## Toll-Free Number

- **Sales, ISV, VAR, and SI Partner Information**  
(800) 969-4636

\*Training facilities are located at these branches; additional locations are available.

\*\*Authorized to sell iWay Software only.